

YAMAHA

MIXING CONSOLE

MG10XU

MG10

Owner's Manual

ZT44470 EN

Welcome

Thank you for purchasing the Yamaha MG10XU/MG10 Mixing Console. Please read this manual thoroughly to get the most out of the product and ensure long-term, trouble-free use. After reading this manual, keep it readily available for future reference.

- In this manual, "MG10XU" is used to indicate contents unique to the MG10XU and "MG10" is used to indicate contents unique to the MG10. The contents are common if those logos are not indicated.
- In this manual, all panel illustrations show the MG10XU panel, unless otherwise specified.
- The illustrations as shown in this manual are for instructional purposes only, and may appear somewhat different from those on your device.
- Steinberg and Cubase are registered trademarks of Steinberg Media Technologies GmbH.
- The company names and product names in this manual are the trademarks or registered trademarks of their respective companies.

Included Accessories

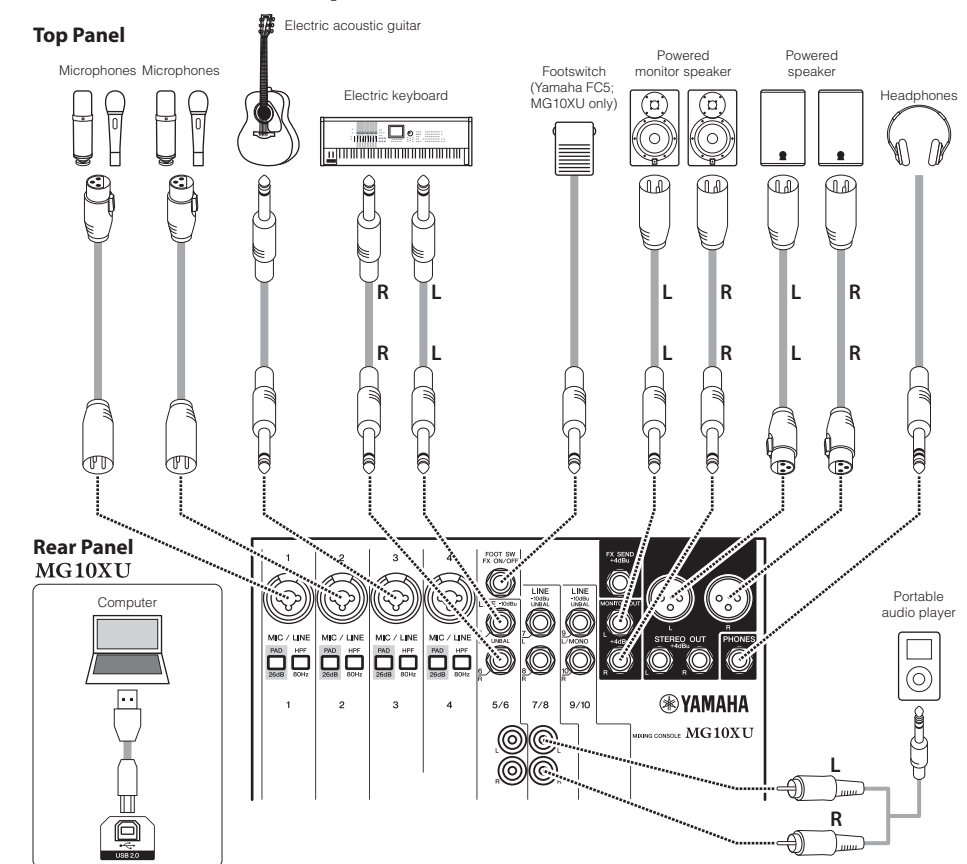
- AC power adaptor
- Precautions: Please read this thoroughly before using the product. Warranty information for Europe is also included in this leaflet.
- Technical Specifications (English only): Includes block diagram, dimensions, general specifications, and input/output characteristics.
- Cubase AI Download Information (MG10XU only): Contains the access code necessary for downloading the Steinberg DAW software "Cubase AI." Visit the following Yamaha website for downloading and installing Cubase AI, and information on making necessary settings. http://www.yamahaproaudio.com/mg_xu/
- Owner's manual (this leaflet)

Quick Start Guide

STEP 1 Connecting external devices, such as speakers, microphones and instruments

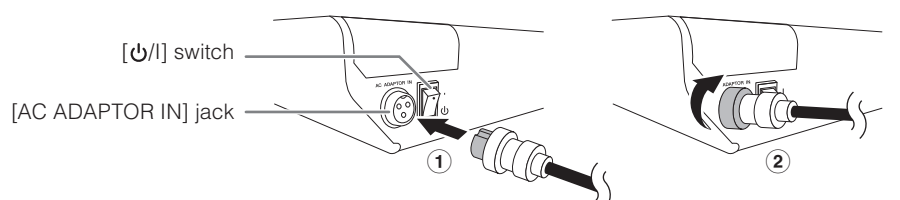
- 1 Make sure that all devices to be connected to the unit are turned off.
- 2 Connect speakers, microphones and instruments referring to the connection example below.

Connection Example



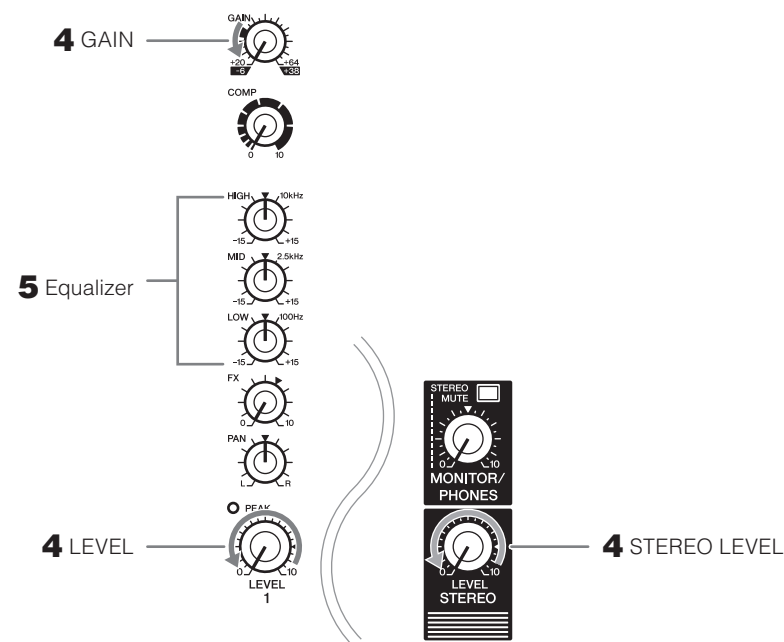
STEP 2 Getting sound to the speakers

- 1 Make sure that the [P/I] switch at the rear panel is set to the [P] position (power off).
- 2 Connect the supplied AC power adaptor.
 - 1 Connect the power adaptor with the gap of the plug facing up, aligning it to the [AC ADAPTOR IN] connector.
 - 2 Turn the fastening ring clockwise to secure the connection.

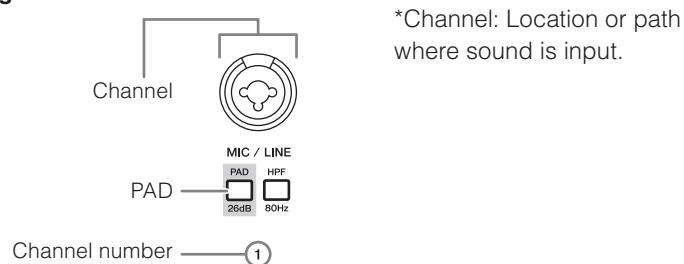


3 Plug the power adaptor into a standard household power outlet.

- 3 Make sure that all switches on the unit are not engaged (pressed in).
- 4 Turn all the level control knobs fully to the left (minimum). These include the [GAIN] knobs (white), [LEVEL] knobs (white), and [STEREO LEVEL] knob (red).
- 5 Set the equalizer knobs (green) to the center "V" position.



- 6 If you connect a device with high output level, such as a CD player or an electric keyboard, to one of the channels 1 to 4, turn on (▲) the [PAD] switch of the corresponding channel*.
 - *Channel: Location or path where sound is input.



NOTE If you are using condenser microphones, turn on (▲) the [PHANTOM +48V] switch.

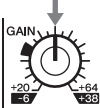
- 7 Make sure that the volume of a powered speaker or amplifier is set to the minimum.
- 8 Turn on the power to the connected devices in the following order: (microphone), (instrument), (audio device) ➡ [P/I] (this unit) ➡ (speakers).

NOTICE Follow this order to prevent any loud, unexpected noise from the speakers. Reverse the order when turning the power off.

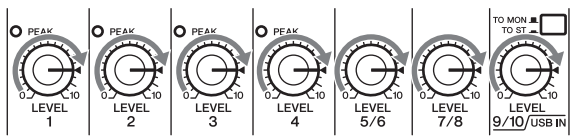
- 9 Set the [STEREO LEVEL] knob to the "◀" position.



- 10 For channels to which a microphone is connected, set the [GAIN] knob to roughly the 12 o'clock position.



- 11 Set the [LEVEL] knob of each channel in use to the "◀" position.



- 12 While playing your instrument or speaking into the microphone, raise the volume of the powered speaker or amplifier until the desired volume is reached.

NOTE If the sound is not heard or the sound is distorted, follow the instructions in the boxed section below step 13.

- 13 Set the [LEVEL] knobs as necessary to adjust the volume balance between the corresponding channels.

This completes the STEP 2 instructions.

NOTE The volume can be adjusted by using three functions; [PAD], [GAIN], and [LEVEL]. Once you set the [PAD] switch and the [GAIN] knob, avoid adjusting those controls as much as possible. Instead normally use the [LEVEL] knob to adjust the volume. For details about each function, see the "Controls and Functions" section.

If there is no sound:

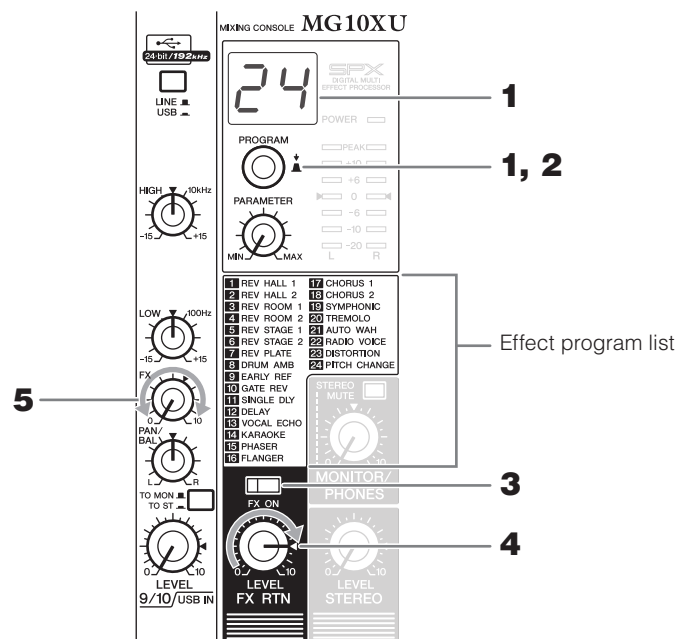
- Are the [PAD] switches turned on (▲)? Turn the switches off (■).
- Are the [GAIN] knobs raised enough?
- Raise the volume of the connected instruments or audio devices.

If the sound is distorted:

- Are the [PAD] switches turned off (■)? Turn the switches on (▲).
- Are the [GAIN] knobs raised too high? Turn the knobs to the left to lower the volume.
- Lower the volume of the connected instruments or audio devices.

Applying Effects MG10XU

The MG10XU features high-quality built-in signal processing effects that are in the same league as our famed SPX effect processor series. Applying effects (as described below) allows you to simulate the acoustics of different performance environments.



- 1 Turn the [PROGRAM] knob to select a desired effect program number from the effect program list.

The currently selected effect program number flashes on the display.

NOTE For details about the effect programs, refer to the "Effect Programs" list below.

- 2 Press the [PROGRAM] knob to actually select it.

The desired effect program is selected.

- 3 Turn on (▲) the [FX ON] switch.

- 4 Set the [FX RTN LEVEL] knob to the "◀" position.

- 5 Turn the [FX] knob of the channel to which you want to apply the effect to adjust the effect amount.

Effect Programs

No.	Program	Parameter	Description
1	REV HALL 1	Reverb Time	Reverb simulating a large space such as a concert hall.
2	REV HALL 2	Reverb Time	
3	REV ROOM 1	Reverb Time	Reverb simulating the acoustics of a small space (room).
4	REV ROOM 2	Reverb Time	
5	REV STAGE 1	Reverb Time	Reverb simulating a large stage.
6	REV STAGE 2	Reverb Time	
7	REV PLATE	Reverb Time	Simulation of a metal-plate reverb unit, producing a more hard-edged reverberation.
8	DRUM AMB	Reverb Time	A short reverb that is ideal for use with a drum kit.
9	EARLY REF	Room Size	An effect which isolates only the early reflection components from reverberation, creating a 'flashier' effect than conventional reverb.
10	GATE REV	Room Size	An effect which cuts halfway the tail-end of the reverberation, making a more powerful sound.
11	SINGLE DLY	Delay Time	An effect which repeats the same sound only once. Shortening the delay time produces a doubling effect.
12	DELAY	Delay Time	Feedback delay adding multiple delayed signals.
13	VOCAL ECHO	Delay Time	Echo designed for conventional vocals.
14	KARAOKE	Delay Time	Echo designed for karaoke (sing-along) applications.
15	PHASER	LFO* Freq	Cyclically changes the phase to add modulation to the sound.
16	FLANGER	LFO* Freq	Adds modulation to the sound, producing an effect similar to the rise and fall sound of a jet engine.
17	CHORUS 1	LFO* Freq	Creates a thicker ensemble-like sound by adding the multiple sounds with different delay times.
18	CHORUS 2	LFO* Freq	
19	SYMPHONIC	LFO* Depth	Multiplies the sound for thicker texture.
20	TREMOLO	LFO* Freq	An effect which cyclically modulates the volume.
21	AUTO WAH	LFO* Freq	A wah-wah effect with cyclical filter modulation. The [PARAMETER] knob adjusts the speed of the LFO* that modulates the "wah" filter.
22	RADIO VOICE	Cutoff Offset	Recreates the lo-fi sound of an AM radio. The [PARAMETER] knob adjusts the frequency band to be emphasized.
23	DISTORTION	Drive	Adds a sharp-edged distortion to the sound.
24	PITCH CHANGE	Pitch	An effect which changes the pitch of the signal.

**LFO* stands for Low Frequency Oscillator. An LFO is normally used to periodically modulate another signal, using different waveform shapes and modulation speeds.

Troubleshooting

Power does not come on.

- Did you properly plug the power adaptor into an appropriate AC outlet?
- Did you firmly and securely connect the power plug?

No sound.

- Did you turn on the powered speaker or the power amp?
- Did you properly connect the microphones, external devices, and speakers?
- Are any connecting cables shorted or damaged?
- Have the [GAIN] knobs and [LEVEL] knobs of all relevant channels as well as the [STEREO LEVEL] knob been set to appropriate levels?
- Are the [PAD] switches turned on (▲)?
 - Turn the switch off (■). If the volume of sound source is too soft, turning on the switch may result in no audible sound.
- Is the [STEREO MUTE] switch turned on (▲)? (MG10XU)
 - If the switch is turned on (▲), the sound is not output from the [MONITOR OUT] jack/[PHONES] jack, since this mutes the sound of the stereo bus.

Sound is faint, distorted, or noisy.

- Are the [PEAK] LEDs lit?
 - Lower the [GAIN] knobs of all relevant channels, or turn on (▲) the [PAD] switches.
- Are the [GAIN] knobs and [LEVEL] knobs of all relevant channels, and the [STEREO LEVEL] knob set too high?
- Are the "PEAK" (red) lamps of the level meter lit?
 - Set the [LEVEL] knobs of all relevant channels and the [STEREO LEVEL] knob to appropriate levels.
- Is the volume from the connected device too loud?
 - Lower the volume of the connected device.
- Is the [TO MON] switch set to [TO ST]? (MG10XU)
 - If you set the switch to [TO ST] when you use the DAW software, a loop may be produced depending on the setting of DAW software, possibly resulting in feedback. When recording while listening to the sound via a computer, be sure to set the switch to [TO MON].

The sound of vocals and speech isn't clear enough.

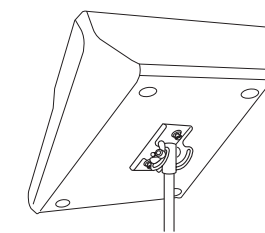
- Turn on (▲) the [HPF] switches.
 - The sound becomes clearer.
- Adjust the equalizer knobs (example: lower the [LOW] knobs, raise the [HIGH] knobs).

No effect is applied (MG10XU)

- Did you turn on (▲) the [FX ON] switch?
- Did you set the [FX RTN LEVEL] knob to an appropriate level?
- Are the [LEVEL] knobs and [FX] knobs of all relevant channels raised enough?

Mounting to a Microphone Stand

The unit can be mounted onto a microphone stand as illustrated at right, by using the optionally available Yamaha BMS-10A microphone stand adaptor. For instructions on mounting, refer to the BMS-10A Owner's Manual.



General Specifications

0 dBu = 0.775 Vrms Output impedance of signal generator (Rs) = 150 Ω All level knobs are nominal if not specified.

Frequency Response	Input to STEREO OUT	+0.5 dB/-1.0 dB (20 Hz to 48 kHz), refer to the nominal output level @ 1 kHz. GAIN knob: Min
Total Harmonic Distortion (THD+N)	Input to STEREO OUT	0.02 % @ +14 dBu (20 Hz to 20 kHz), GAIN knob: Min 0.003 % @ +24 dBu (1 kHz), GAIN knob: Min
Hum & Noise *1 (20 Hz to 20 kHz)	Equivalent Input Noise	-128 dBu (Mono Input Channel, Rs: 150 Ω, GAIN knob: Max)
	Residual Output Noise	-102 dBu (STEREO OUT, STEREO LEVEL knob: Min)
Crosstalk (1 kHz) *2		-83 dB
Input Channels		10 channels: Mono [MIC/LINE]: 4, Stereo [LINE]: 3
Output Channels		STEREO OUT: 2, PHONES: 1, MONITOR OUT: 1, AUX (FX) SEND: 1
Bus		Stereo: 1, AUX (FX): 1
Input Channel Function	PAD	CH 1 - CH 4 26 dB
	HPF	CH 1 - CH 4 80 Hz, 12 dB/oct
	COMP	CH 1 - CH 2 1-knob compressor Threshold: +22 dBu to -8 dBu, Ratio: 1:1 to 4:1, Output level: 0 dB to 7 dB, Attack time: approx. 25 msec, Release time: approx. 300 msec
	EQ	CH 1 - CH 9/10 HIGH: Gain: +15 dB/-15 dB, Frequency: 10 kHz shelving CH 1 - CH 4 MID: Gain: +15 dB/-15 dB, Frequency: 2.5 kHz peaking CH 1 - CH 9/10 LOW: Gain: +15 dB/-15 dB, Frequency: 100 Hz shelving
	PEAK LED	CH 1 - CH 4 LED turns on when post EQ signal reaches 3 dB below clipping (+17 dBu)
Level Meter	Post STEREO LEVEL Knob	2x7-segment LED meter [PEAK (+17), +10, +6, 0, -6, -10, -20 dB]
Internal Digital Effects (MG10XU Only)	SPX Algorithm	24 programs
USB Audio (MG10XU Only)	2 IN / 2 OUT	USB Audio Class 2.0 compliant Sampling Frequency: Max 192 kHz, Bit Depth: 24-bit
Phantom Power Voltage		+48 V
Power Supply Adaptor		PA-10 (AC 38 VCT, 0.62 A, Cable length = 3.6 m), or equivalent recommended by Yamaha
Power Consumption		22.9 W
Dimensions (WxHxD)		244 mm x 71 mm x 294 mm (9.6" x 2.8" x 11.6")
Net Weight		MG10XU: 2.1 kg (4.6 lbs.), MG10: 1.9 kg (4.1 lbs.)
Optional Accessory		Mic Stand Adaptor: BMS-10A
Operating Temperature		0 to +40 °C

*1 Noise is measured with A-weighting filter. *2 Crosstalk is measured with 1 kHz band pass filter.
* The contents of this manual apply to the latest specifications as of the publishing date. To obtain the latest manual, access the Yamaha website then download the manual file.

Top panel Channel section (Input: ① to ⑭)

① [MIC/LINE] mono input jacks (channels 1-4)

For connecting a microphone, instrument, or audio device (CD player, etc.) to the unit. These jacks support both XLR and phone plugs.

② [PAD] switches

Turning the switch on (▲) will attenuate the sound input to the unit. If you hear distortion or the [PEAK] LED ⑩ lights, turn the switch on (▲).

NOTE Turn the [LEVEL] knob to "0" (minimum) before toggling the [PAD] switch on (▲) and off (■). Otherwise, noise may be produced.

③ [HPF] (High-Pass Filter) switches

Turning the switch on (▲) will apply a high-pass filter that attenuates frequencies below 80 Hz. When speaking into the microphone, you may want to turn this switch on (▲), in order to reduce unwanted vibration and wind sound received by the microphone.

④ [GAIN] knobs

Determines the basic volume for each of the channels 1 to 4. Adjust these so that the corresponding [PEAK] LEDs ⑩ flash briefly when singing or playing the loudest.

⑤ [COMP] knobs

Adjusts the amount of compression applied to the channel. As the knob is turned to the right, the threshold, the ratio, and the output level are adjusted at the same time.
Threshold: +22 dBu to -8 dBu; Ratio: 1:1 to 4:1; Output level: 0 dB to +7 dB;
Attack time: approx. 25 msec; Release time: approx. 300 msec

⑥ [PHANTOM +48V] switch/LED

When this switch is on (▲), the LED lights indicating that the unit supplies DC+48 V phantom power to the XLR plugs of the [MIC/LINE] mono input jacks ①. Turn this switch on when using a phantom-powered condenser microphone.

NOTICE

- Be sure to leave this switch off (■) if you do not need phantom power. Follow the important precautions below, in order to prevent noise and possible damage to external devices as well as the unit when you operate this switch.
- Be sure to leave this switch off when connecting a microphone or other device that does not require phantom power to channels 1 to 4.
- Do not connect/disconnect a cable to/from channels 1 to 4 while this switch is on.
- Turn the [LEVEL] knobs of channels 1 to 4 to the minimum before operating this switch.

⑦ Equalizer (EQ) knobs

Adjust the sound quality by using the [HIGH] (high frequency band), [MID] (middle frequency band), and [LOW] (low frequency band) knobs. If you do not need to adjust the sound quality, set the knob to the "▼" (flat) position.

⑧ [FX] (effect) knobs MG10XU

[AUX] knobs MG10

[FX]: Adjusts the volume sent from each channel to the internal effect and the [FX SEND] jack.
[AUX]: Adjusts the volume sent from each channel to the [AUX SEND] jack.

⑨ [PAN] knobs (channels 1 to 4)

[BAL] knobs (channels 5/6 and 7/8)

[PAN/BAL] knobs (channels 9/10)

[PAN]: Adjusts the volume balance of each channel sent to the stereo bus, and determines the positioning of the sound image between left and right (stereo L/R). When the knob is located at the 12 o'clock position, the channel's sound will be sent to the stereo bus channels (L and R) at the same volume. In this case, the sound image is positioned at the center.

[BAL]: Determines the volume balance of the stereo channels (5/6 to 9/10) (L/R) sent to the stereo bus. When the knob is located at the 12 o'clock position, the sound of the stereo channels will be sent to the stereo bus channels (L and R) at the same volume respectively.

[PAN/BAL]: Provides both [PAN] and [BAL] functions. You can use this as a [PAN] control when sound is input to the [LINE] (L/MONO) jack, and as a [BAL] control when sound is input to both [LINE] (L) and [LINE] (R) jacks.

⑩ [PEAK]LED

Lights when the volume of input and/or post-equalizer sound is too high (when reaching 3 dB below clipping). If it is lit frequently, turn the [GAIN] knob ④ to the left to lower the volume.

⑪ [LEVEL] knobs

For adjusting the volume balance among the channels. Generally, set this to the "◀" position.

⑫ [TO MON] / [TO ST] switch MG10XU

For selecting the output destination of the input sound to channels 9/10. Normally set this switch to [TO ST]. When you use the unit with a computer connected to the [USB 2.0] terminal, toggle this switch according to your specific application, referring to the chart in "Rear panel USB section."

⑬ [LINE] stereo input jacks (channels 5/6 to 9/10)

For connecting line-level devices such as an electric keyboard or an audio device. These jacks support phone plugs and RCA-pin plugs.

NOTE Regarding input to channels 5/6 and 7/8, if both phone and RCA-pin jacks are used at the same time, the phone jack will take priority.

⑭ [LINE] / [USB] switch MG10XU

Toggles the sound source input to channels 9/10. When the switch is set to [LINE], the source will be the [LINE] stereo input jack ⑬, and when set to [USB], the source will be the [USB 2.0] terminal ⑫.

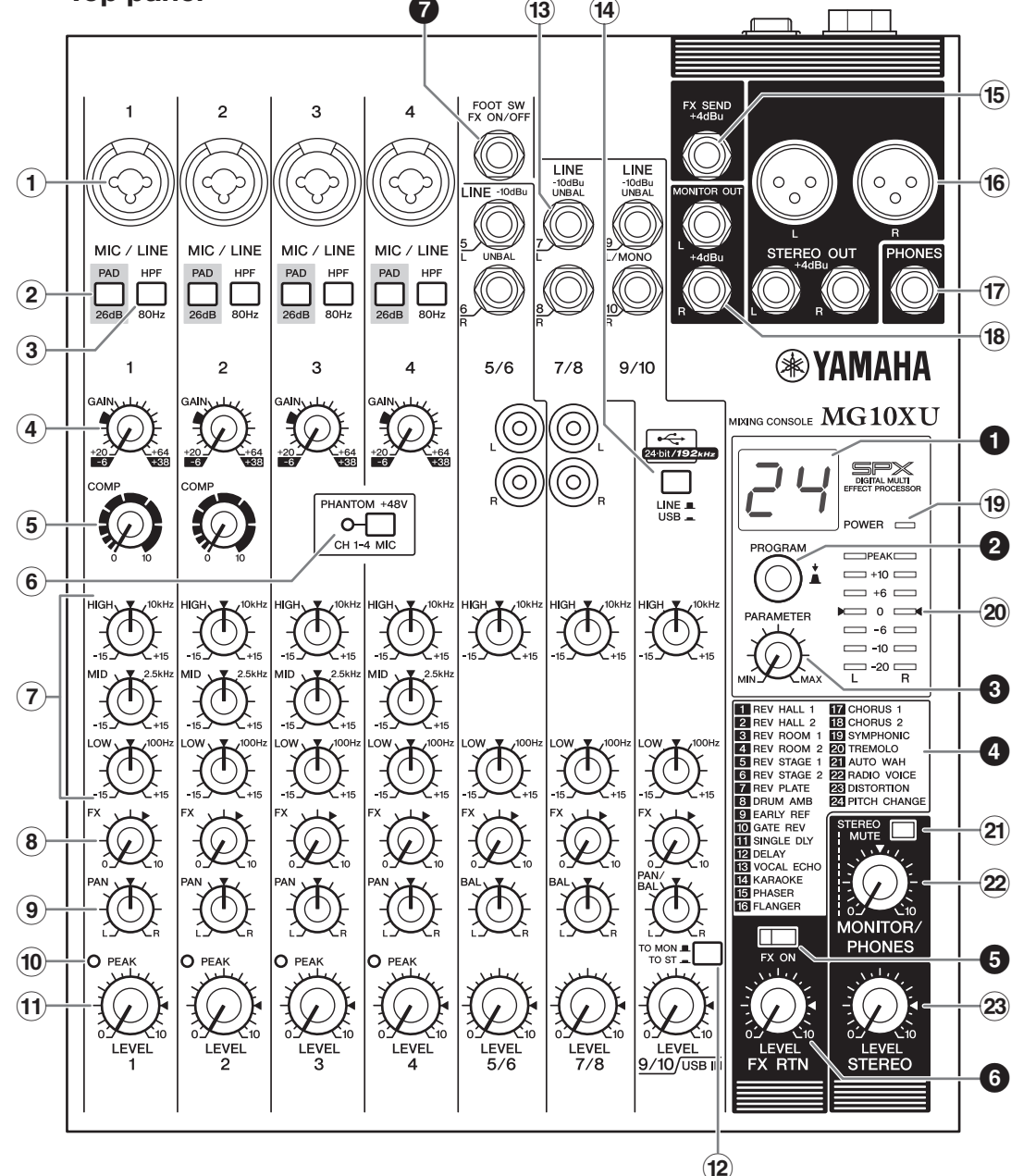
Rear panel USB section MG10XU

⑫ [USB 2.0] terminal

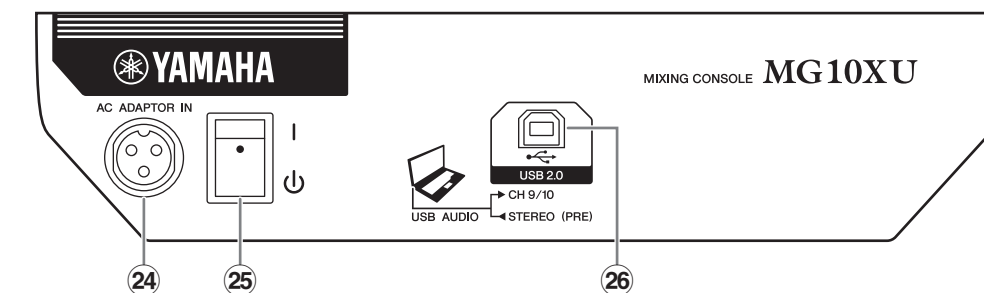
For connecting to a computer via a commercially available USB 2.0 cable. (This product does not come with a cable.) The sound of the stereo bus is output to the computer. (The [STEREO LEVEL] knob ⑫ does not affect the sound.) For inputs and outputs to/from the computer, you may need a dedicated USB driver. Check and download the driver at the following Yamaha web site and install it to the computer before use.
http://www.yamahaproaudio.com/mg_xu/

Controls and Functions

Top panel



Rear panel



Rear panel

⚠ Caution

The unit may heat up by as much as 15 to 20°C while the power is on. This is normal. Please note that since the panel temperature may exceed 50°C in ambient temperatures higher than 30°C, you should exercise caution to prevent burns.

⑫ [AC ADAPTOR IN] connector

For connecting the supplied AC power adaptor.

⑫ [⏻/⏻] switch

For turning the power of the unit to standby (⏻) and on (⏻). The [POWER] LED ⑫ on the top panel lights when the switch is set to on (⏻).

NOTE

- Rapidly switching the unit between on and standby in succession can cause it to malfunction. After setting the unit to standby, wait for about six seconds before turning it on again.
- Even when the switch is in the standby (⏻) position, electricity is still flowing to the unit. If you do not plan to use the unit for a while, be sure to unplug the AC power adaptor from the outlet.

Top panel Master section (Input: ⑮ to ⑳)

⑮ [FX SEND] jack : MG10XU

[AUX SEND] jack: MG10

For connecting an external effects unit or a monitor system for players. This phone-plug jack outputs the sound adjusted with the [FX] knob or [AUX] knob respectively.

⑯ [STEREO OUT] jacks

For connecting a powered speaker or powered amp. These jacks support both XLR and phone plugs.

⑰ [PHONES] output jack

For connecting a set of headphones. This jack supports a stereo phone plug.

⑱ [MONITOR OUT] jacks

For connecting a monitor system for operators. These jacks support phone plugs.

⑲ [POWER] LED

Lights when the [⏻/⏻] switch on the rear panel is set to on (pressed to the [⏻] position).

⑳ Level meter

The L and R meters show the level (volume) of the signal output from the [STEREO OUT] jacks or [PHONES] jack. In this state, when setting the [TO MON] / [TO ST] switch for channels 9/10 to [TO MON], you can hear the sound only from channels 9/10. For details about the switch, see the "Rear panel USB section" below.

㉑ [STEREO MUTE] switch MG10XU

Turning the switch on (▲) will mute the sound of stereo bus from the output of [MONITOR OUT] jacks or [PHONES] jack. In this state, when setting the [TO MON] / [TO ST] switch for channels 9/10 to [TO MON], you can hear the sound only from channels 9/10. For details about the switch, see the "Rear panel USB section" below.

㉒ [MONITOR/PHONES] knob

Adjusts the volume output to the [MONITOR OUT] jacks and the [PHONES] jack.

㉓ [STEREO LEVEL] knob

Adjusts the overall volume output from the [STEREO OUT] jacks.

Top panel

Internal effect section (Output: ① to ⑦) MG10XU

① Display

Indicates the effect program number selected with the [PROGRAM] knob ②. The number flashes during selection; however, if several seconds pass without a selection being made, the program returns to the last number selected.

② [PROGRAM] knob

Selects one of the 24 internal effects from 1-24. Turn the knob to select the desired effect program, and then press the knob to actually set it. For instructions on how to apply the effect, see the section "Applying effects" on the reverse side.

NOTE Turning the knob while pressing it down also allows you to simultaneously select and set the effect program (without needing to press the knob finally to set it).

③ [PARAMETER] knob

Adjusts the parameter (depth, speed, etc.) for the selected effect. The last value used with each effect program is saved. For details about the parameter, see the "Effect programs" list on the reverse side.

NOTE When you change to a different effect program, the unit automatically restores the value that was previously used with that program (regardless of the current position of the [PARAMETER] knob). Once you turn the [PARAMETER] knob, the value of current knob position will become valid.

④ Effect program list

This is the list of the internal effect programs. For details about the programs, see the "Effect programs" list on the reverse side.

⑤ [FX ON] switch

When the switch is turned on (▲), the switch lights indicating the internal effect is active. If you turn off the internal effect with the foot switch when the switch is on (▲), the LED of the switch flashes.

⑥ [FX RTN LEVEL] knob

Adjusts the volume of the internal effect sound.

⑦ [FOOT SW] jack

For connecting an optionally available unlatched type footswitch, such as the Yamaha FC5. When the [FX ON] switch ⑤ is turned on (▲), the internal effects can be toggled on/off with the footswitch as needed with your foot. This jack supports a phone plug.

ADDRESS LIST

NORTH AMERICA

CANADA
Yamaha Canada Music Ltd.
135 Milner Avenue, Toronto, Ontario,
M1S 3R1, Canada
Tel: +1-416-298-1311

U.S.A.
Yamaha Corporation of America
6600 Orangefire Avenue, Buena Park, CA 90620,
U.S.A.
Tel: +1-714-522-9011

CENTRAL & SOUTH AMERICA

MEXICO
Yamaha de México, S.A. de C.V.
Av. Insurgentes Sur 1647 Piso 9, Col. San José
Insurgentes, Delegación Benito Juárez, México,
D.F., C.P. 06900
Tel: +52-55-580-6060

BRAZIL
Yamaha Musical do Brasil Ltda.
Rua Filadélfia Ramos, 302 - Cj 52 e 54 - Torre B - Vila
Olímpia - CEP:04551-010 - São Paulo/SP, Brazil
Tel: +55-11-3704-1377

ARGENTINA
Yamaha Music Latin America, S.A.,
Sucursal Argentina
Olga Cossetini 1553, Piso 4 Norte,
Madero Este-C1107CEC,
Buenos Aires, Argentina
Tel: +54-11-4119-7000

VENEZUELA
Yamaha Musical de Venezuela, C.A.
AV. Manzanaras, C.C. Manzanaras Plaza,
Piso 4, Oficina 0401, Baruta, Caracas, Venezuela
Tel: +58-21-9463-1877

**PANAMA AND OTHER LATIN
AMERICAN COUNTRIES/
CARIBBEAN COUNTRIES**
Yamaha Music Latin America, S.A.
Edif. Torre Banco General, Piso 7, Urbanización
Marbella, Calle 47 y Aquilino de la Guardia,
Ciudad de Panamá, República de Panamá
Tel: +507-269-5311

EUROPE
THE UNITED KINGDOM/IRELAND
Yamaha Music Europe GmbH (UK)
Sherborne Drive, Tiltbrook, Milton Keynes,
MK7 8BL, U.K.
Tel: +44-1908-266700

GERMANY
Yamaha Music Europe GmbH
Siemensstrasse 22-24, 25462 Rellingen, Germany
Tel: +49-4101-303-0

SWITZERLAND/LIECHTENSTEIN
Yamaha Music Europe GmbH, Rellingen,
Branch Switzerland in Zürich
Seefeldstrasse 94, 8008 Zürich, Switzerland
Tel: +41-44-8378080

AUSTRIA/BULGARIA
Yamaha Music Europe GmbH Branch Austria
Schleiergasse 20, 1100 Wien, Austria
Tel: +43-1-460203900

**CZECH REPUBLIC/HUNGARY/
ROMANIA/SLOVAKIA/SLOVENIA**
Yamaha Music Europe GmbH
Branch Austria
Schleiergasse 20, 1100 Wien, Austria
Tel: +43-1-460203900

POLAND/LITHUANIA/LATVIA/ESTONIA
Yamaha Music Europe GmbH
Sp. z o.o. Oddział w Polsce
ul. Wroclawska 14, 02-553 Warszawa, Poland
Tel: +48-22-880-08-88

MALTA

Olimpus Music Ltd.
Valletta Road, Mosta MST9010, Malta
Tel: +356-2133-2093

**NETHERLANDS/BELGIUM/
LUXEMBOURG**
Yamaha Music Europe Branch Benelux
Clarussehof 5b, 4133 AB Vianen, The Netherlands
Tel: +31-347-358040

FRANCE
Yamaha Music Europe
7 rue Ambroise Croizat, Zone d'activités de Pariset,
77183 Croissy-Beaubourg, France
Tel: +33-1-4661-4000

ITALY
Yamaha Music Europe GmbH, Branch Italy
Viale Italia 88, 20020, Lainate (Milano), Italy
Tel: +39-02-915777-1

SPAIN/PORTUGAL
Yamaha Music Europe GmbH Ibérica, Sucursal
en España
Ctra. de la Corona km. 17,200, 28231
Las Rozas de Madrid, Spain
Tel: +34-91-639-88-88

GREECE
Philippou Nakas S.A. The Music House
19th km. Leof. Lavriou 190 02 Peania - Attiki,
Greece
Tel: +30-210-6686168

SWEDEN/FINLAND/ICELAND
Yamaha Music Europe GmbH Germany filial
Scandinavia
JA Wettergrensgata 1, 400 43 Göteborg, Sweden
Tel: +46-31-493-34-00

DENMARK
Yamaha Music Denmark,
Filial of Yamaha Music Europe GmbH, Fyskland
Genstrømsg. 3C, ST. TH., 2600 Søborg, Denmark
Tel: +45-44-92-49-00

NORWAY
Yamaha Music Europe GmbH Germany -
Norwegian Branch
Grim Nieringspark 1, 1332 Osterås, Norway
Tel: +47-62-716-7800

RUSSIA
Yamaha Music (Russia) LLC.
Room 37, entrance 7, bld. 7, Kievskaya street,
Moscow, 121059, Russia
Tel: +7-495-626-5005

OTHER EUROPEAN COUNTRIES
Yamaha Music Europe GmbH
Siemensstrasse 22-24, 25462 Rellingen, Germany
Tel: +49-4101-3030

AFRICA
Yamaha Music Gulf FZE
JAFZA-16, Office 512, P.O.Box 17328,
Jebel Ali FZE, Dubai, UAE
Tel: +971-4-801-1500

MIDDLE EAST
TURKEY
Yamaha Music Europe GmbH
Merkez Almanyay Türkiye İstanbul Sahesi
Maslak Meydan Sokak, Spring Gir Plaza Bıgımsız
Böl. No:3, Sarıyer İstanbul, Turkey
Tel: +90-212-999-8010

CYPRUS
Yamaha Music Europe GmbH
Siemensstrasse 22-24, 25462 Rellingen, Germany
Tel: +90-4101-303-0

OTHER COUNTRIES
Yamaha Music Gulf FZE
JAFZA-16, Office 512, P.O.Box 17328,
Jebel Ali FZE, Dubai, UAE
Tel: +971-4-801-1500

ASIA

THE PEOPLE'S REPUBLIC OF CHINA
Yamaha Music & Electronics (China) Co., Ltd.
2F, Yunhedaba, 1818 Xizhuhua-lu, Jingnan-qu,
Shanghai, China
Tel: +86-21-6461-7700

INDIA
Yamaha Music India Private Limited
Sparadee Building, Ground Floor, Tower A,
Sector-47, Gurgaon-Sohna Road, Gurgaon-122002,
Haryana, India
Tel: +91-124-485-3300

INDONESIA
PT. Yamaha Musik Indonesia (Distributor)
Yamaha Music Center Bldg. Jalan Jend. Gatoet
Subroto Kav. 4, Jakarta 12930, Indonesia
Tel: +62-21-520-2577

KOREA
Yamaha Music Korea Ltd.
8F, Dongsung Bldg. 21, Teheran-ro 87-gil,
Gangnam-gu, Seoul, 135-880, Korea
Tel: +82-2-5676-3300

MALAYSIA
Yamaha Music (Malaysia) Sdn. Bhd.
No. 8, Jalan Perbandaran, Kelana Jaya, 47301
Petaling Jaya, Selangor, Malaysia
Tel: +60-3-78039000

SINGAPORE
Yamaha Music (Asia) Private Limited
Block 202 Hinglang Street 21, #02-00,
Singapore 530202, Singapore
Tel: +65-6740-0700

TAIWAN
Yamaha Music & Electronics Taiwan Co., Ltd.
2F, No. 1, Yuanfong Rd. Banqiao Dist.
New Taipei City 22063, Taiwan, R.O.C.
Tel: +886-2-7741-8888

THAILAND
Siam Music Yamaha Co., Ltd.
3, 4, 15, 16th Fl., Siam Motors Building,
89/1 Rama I Road, Wangmai,
Pathumwan, Bangkok 10330, Thailand
Tel: +66-215-2622

VIETNAM
Yamaha Music Vietnam Company Limited
15th Floor, Nam A Bank Tower, 201-203 Cach
Mang Thang Tam St., Ward 4, Dist.3,
Ho Chi Minh City, Vietnam
Tel: +84-8-3818-1122

OTHER ASIAN COUNTRIES
Yamaha Corporation
Sales & Marketing Division
10-1, Nakazawa-cho, Naka-ku, Hamamatsu,
Japan 430-8650
Tel: +81-53-4662-212

OCEANIA
AUSTRALIA
Yamaha Music Australia Pty. Ltd.
Level 1, 99 Queensbridge Street, Southbank,
VIC 3006, Australia
Tel: +61-3-9693-5111

**COUNTRIES AND TRUST
TERRITORIES IN PACIFIC OCEAN**
Yamaha Corporation
Sales & Marketing Division
10-1, Nakazawa-cho, Naka-ku, Hamamatsu,
Japan 430-8650
Tel: +81-53-4662-212

Application	Selection of the output destination sent from channels 9/10		Selection of the monitoring sound with the headphones/monitor speaker	
	[TO MON] / [TO ST] switch	Output destination	[STEREO MUTE] switch	Monitoring sound
When recording with DAW software while listening to the playback sound from a computer.	[TO MON] ⑫*1	[MONITOR OUT] jack*2 [PHONES] jack*2	On (▲) Off (■)	The direct sound (of the instrument) input to the MG10XU will be muted, allowing you to hear the playback sound only from the DAW. (Direct monitoring: Off.) You can hear the mixed sound of the direct instrument sound input to the MG10XU and the playback sound from the DAW. (Direct monitoring: On.)
When playing back sound from a computer. For example: BGM playback, Internet broadcasting	[TO ST] ⑫	Stereo bus → [STEREO OUT] jack	Normally set to Off (■)	You can hear the mixed sound of the instrument sound input to the MG10XU and the playback sound from a computer.

*1 NOTICE If you set the switch to [TO ST] when you use the DAW software, a loop may be produced, possibly resulting in feedback.

*2 The audio signal cannot be sent to the computer because it does not pass through the stereo bus.